

Development Tract

1103 Powder House Road, Aiken, SC 29803



FOR SALE

- +/- 10 acres on East Pine Log Road and Powderhouse Road
- Approximately 1 mile from Whiskey Road
- Very flat and rectangular parcel; highly visible with a traffic signal and a turn lane
- Zoned UD, in Aiken County
- Would need to be planned commercial and annexed into the City
- Utilities are on site, near Reiter building
- SCDOT Daily Traffic Count as of March 2009: 24,700
- Will not consider subdividing

SALES PRICE:

\$169,000/ acre



Contact **Barry Buchanan** for more information:

Office: 803. 644. 9990

Cell: 803. 645. 0156

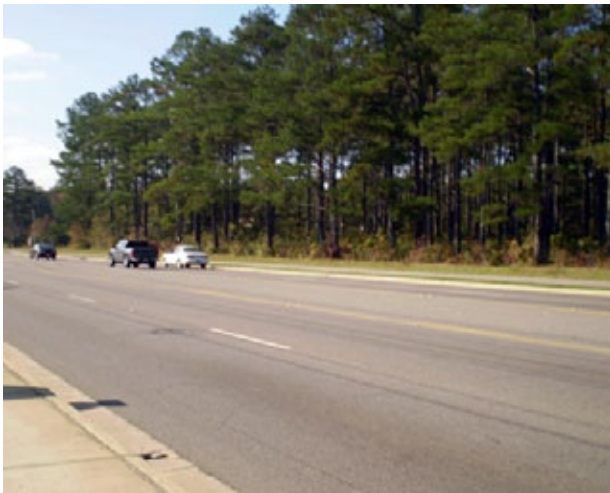
E-mail: bbuchanan@gforcecable.com

R.B. Bolton & Associates

P.O. Box 619 Aiken, SC 29802
www.rbbolton.com

Development Tract

1103 Powder House Road, Aiken, SC 29803



R.B. Bolton & Associates

P.O. Box 619 Aiken, SC 29802
www.rbbolton.com